

156 Rokesby Road
Slough
SL2 2EE



HUNTMORE
— HOMES —





156 Rokesby Road

£440,000

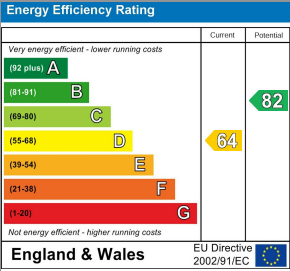
Rokesby Road - Huntmore Homes are delighted to offer for sale this 3 bedroom end-terrace house. Briefly comprises hallway, living room, spacious kitchen / diner, conservatory, 3 good size bedrooms and a family bathroom. Lovely rear garden with pation area, garden sheds and mature planting. Further benefits from OSP for 2 cars. Close to schools and shops. C/Tax C. EPC to follow.



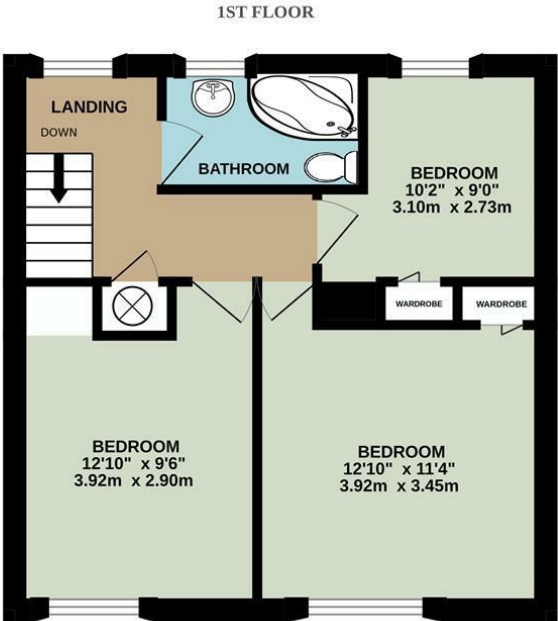
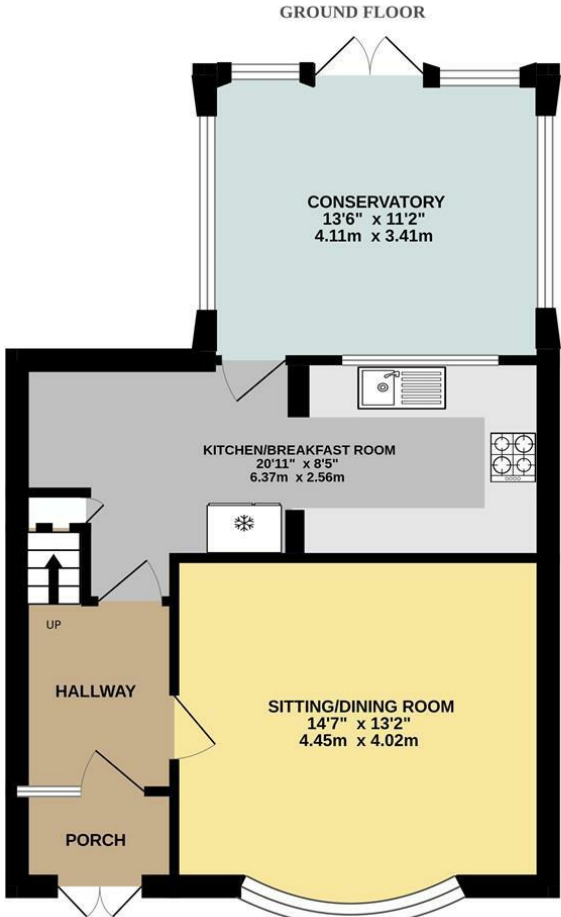
Local Authority
Slough

Council Tax Band
C

Directions



Agents Note: Whilst every care has been taken to prepare these particulars, they are for guidance purposes only. All measurements are approximate and are for general guidance purposes only and whilst every care has been taken to ensure their accuracy, they should not be relied upon and potential buyers/tenants are advised to recheck the measurements



TOTAL FLOOR AREA : 1002 sq.ft. (93.1 sq.m.) approx.

Whilst every attempt has been made to ensure the accuracy of the floorplan contained here, measurements of doors, windows, rooms and any other items are approximate and no responsibility is taken for any error, omission or mis-statement. This plan is for illustrative purposes only and should be used as such by any prospective purchaser. The services, systems and appliances shown have not been tested and no guarantee as to their operability or efficiency can be given.

EPC 4 Home Counties Ltd



Ealing

38 St Mary's Road

Ealing

W5 5EU



Contact

020 8567 2648

ealing@huntmorehomes.com

www.huntmorehomes.com

HUNTMORE
— HOMES —